



## Electrical roll marking machine PT 73 EL

Effort-saving marking of pipes and round parts.

# Electrical roll marking machine PT 73 EL

Effort-saving marking of pipes and round parts.



WIR. PRÄGEN. ZUKUNFT.

## Benefits

- For round parts with larger diameters as well as flat work-pieces
- Very low stress for the work piece through „character by character“ marking
- Marking with 1 or more character rows
- Two-hand release for protection of the worker
- PLC control
- Extremely durable due to massive design
- Constant marking quality due to adjustable, spring-mechanic compensation of tolerances
- Options
  - Without PLC control for integration into manufacturing lines
  - Partly automated

## Technical data

		PT 40	PT 73 H	PT 73 EL	PT 76 EL	PT 79 EL
Electrical connection		-	-	Ja	Ja	Ja
Max. stroke slide (Standard)	mm	85	220	220	250	400
Slide speed	m/min	-	-	7,5	7,5	7,5
Motor power	kW	-	-	0,34	1,10	0,75
Table size	mm	60 x 250	165 x 150	165 x 150	220 x 220	300 x 300
Dimensions (d x d x h)	mm	350x250x500	300x400x620	560x400x1040	800x750x..	1050x850x1200
Weight (Standard)	kg	40,0	130,0	160,0	430,0	600,0
Sound pressure level	db(A)	<75	<75	<75	<75	<75

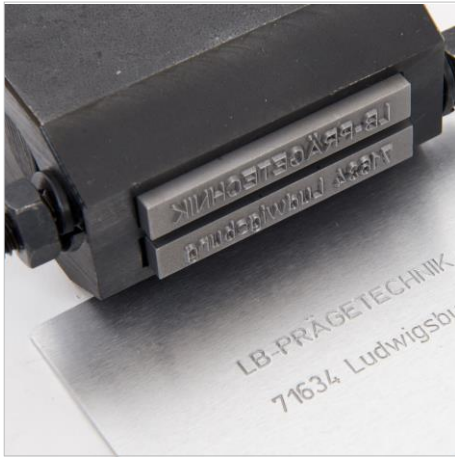
# Electrical roll marking machine PT 73 EL

Effort-saving marking of pipes and round parts.



WIR. PRÄGEN. ZUKUNFT.

## Tools



**Type holders**



**Standard steel types**



**Engraved stamps**



**Numbering heads**



**Marking rolls**

# Electrical roll marking machine PT 73 EL

Effort-saving marking of pipes and round parts.



WIR. PRÄGEN. ZUKUNFT.

## Accessories



**Work piece-specific devices**



**Double roller device**



**Light curtain**



## Please contact us

We are pleased to make a **marking sample** as well as a **non-binding offer**.  
You are welcome to contact us by phone, mail or fax.



**+49 (0)7141 / 374567**



**info@lb-pt.de**



**+49 (0)7141 / 31386**