



Pneumatic built-in impact unit PT 21 PN

Marking of serial parts in production lines with pneumatically supported impact.

Pneumatic built-in impact unit PT 21 PN

Marking of serial parts in production lines with pneumatically supported impact.



WIR. PRÄGEN. ZUKUNFT.

Benefits

- Up to 14 characters into steel and up to 26 characters into aluminium
- Useable for metal, leather, plastics
- Quick change of stamps

Number of characters that can be marked (approximate value)

Depending on font size and material (steel St 37/aluminium)

Font size	PT 8 PN	PT 12 PN	PT 22 PN	PT 21 PN	PT 35 PN
1,5 mm	2 / 3	5 / 11	4 / 6	14 / 26	30 / 70
2,0 mm	1 / 3	4 / 10	4 / 6	12 / 24	26 / 65
2,5 mm	1 / 2	3 / 8	4 / 5	11 / 22	19 / 60
3,0 mm	0 / 2	2 / 6	3 / 5	9 / 20	17 / 55
4,0 mm	0 / 1	1 / 5	2 / 4	8 / 16	15 / 50
5,0 mm	0 / 1	1 / 4	1 / 3	6 / 14	12 / 46

The mentioned values are approximate values. You have doubts, that the impact unit is sufficient for your requirements? Please send us your material sample. We check your requirements in practical use.

Pneumatic built-in impact unit PT 21 PN

Marking of serial parts in production lines with pneumatically supported impact.



WIR. PRÄGEN. ZUKUNFT.

Technical data

		PT 8 PN	PT 12 PN	PT 22 PN	PT 21 PN	PT 35 PN
Pneumatics						
Requires air pressure	bar	4	4	4	4	5
Connection		G 1/4"	G 1/8"	G 1/8"	G 1/4"	G 3/8"
Max. air consumption per stroke	l	0,3	0,4	0,4	2,3	5,4
Mechanics						
Max. power of impact	kN	3	8	18	35	75
Tool fitting	m m	Ø6	Ø8	Ø10/8	Ø10	Ø16
Useable stroke	m m	50	24	32	50	85
Weight	kg	1,0	2,0	2,2	8,5	39,0

Pneumatic built-in impact unit PT 21 PN

Marking of serial parts in production lines with pneumatically supported impact.

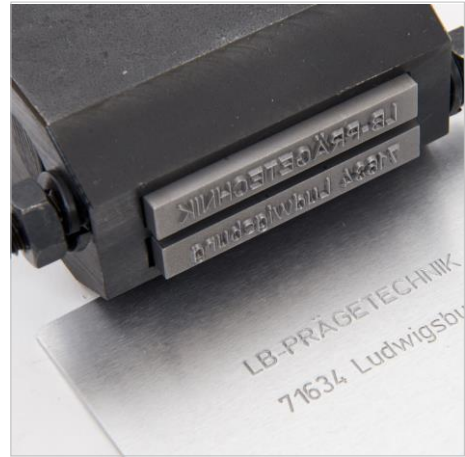


WIR. PRÄGEN. ZUKUNFT.

Tools



Pin stamp



Type holders



Standard steel types



Engraved types, stamps



Numbering Heads

Pneumatic built-in impact unit PT 21 PN

Marking of serial parts in production lines with pneumatically supported impact.



WIR. PRÄGEN. ZUKUNFT.

Accessories



**End position sensor
for position monitoring**

Please contact us

We are pleased to make a **marking sample** as well as a **non-binding offer**.
You are welcome to contact us by phone, mail or fax.



+49 (0)7141 / 374567



info@lb-pt.de



+49 (0)7141 / 31386