



Pneumatic built-in impact unit PT 12 PN

Marking of serial parts in production lines with pneumatically supported impact.

Pneumatic built-in impact unit PT 12 PN

Marking of serial parts in production lines with pneumatically supported impact.



WIR. PRÄGEN. ZUKUNFT.

Benefits

- Up to 5 characters into steel and up to 11 characters into aluminium
- Useable for metal, leather, plastics
- Particularly suitable for soft materials and small amount of characters
- Quick change of stamps

Number of characters that can be marked (approximate value)

Depending on font size and material (steel St 37/aluminium)

Schriftgröße	PT 8 PN	PT 12 PN	PT 22 PN	PT 21 PN	PT 35 PN
1,5 mm	2 / 3	5 / 11	4 / 6	14 / 26	30 / 70
2,0 mm	1 / 3	4 / 10	4 / 6	12 / 24	26 / 65
2,5 mm	1 / 2	3 / 8	4 / 5	11 / 22	19 / 60
3,0 mm	0 / 2	2 / 6	3 / 5	9 / 20	17 / 55
4,0 mm	0 / 1	1 / 5	2 / 4	8 / 16	15 / 50
5,0 mm	0 / 1	1 / 4	1 / 3	6 / 14	12 / 46

The mentioned values are approximate values. You have doubts, that the impact unit is sufficient for your requirements? Please send us your material sample. We check your requirements in practical use.

Pneumatic built-in impact unit PT 12 PN

Marking of serial parts in production lines with pneumatically supported impact.



WIR. PRÄGEN. ZUKUNFT.

Technical data

		PT 8 PN	PT 12 PN	PT 22 PN	PT 21 PN	PT 35 PN
Pneumatics						
Requires air pressure	bar	4	4	4	4	5
Connection		G 1/4"	G 1/8"	G 1/8"	G 1/4"	G 3/8"
Max. air consumption per stroke	l	0,3	0,4	0,4	2,3	5,4
Mechanics						
Max. power of impact	kN	3	8	18	35	75
Tool fitting	mm	Ø6	Ø8	Ø10/8	Ø10	Ø16
Useable stroke	mm	50	24	32	50	85
Weight	kg	1,0	2,0	2,2	8,5	39,0

Pneumatic built-in impact unit PT 12 PN

Marking of serial parts in production lines with pneumatically supported impact.

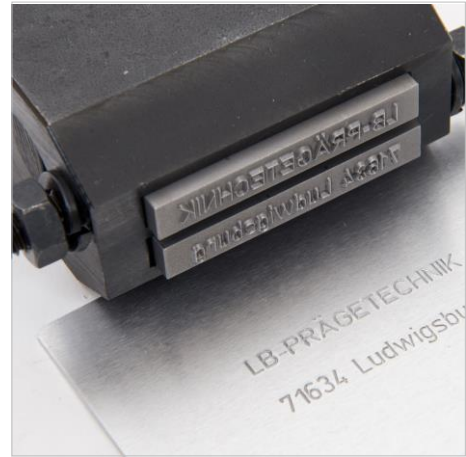


WIR. PRÄGEN. ZUKUNFT.

Tools



Pin stamp



Type holders



Standard steel types



Engraved types, stamps



Numbering Heads

Pneumatic built-in impact unit PT 12 PN

Marking of serial parts in production lines with pneumatically supported impact.



WIR. PRÄGEN. ZUKUNFT.

Accessories



**End position sensor
for position monitoring**

Please contact us

We are pleased to make a **marking sample** as well as a **non-binding offer**.
You are welcome to contact us by phone, mail or fax.



+49 (0)7141 / 374567



info@lb-pt.de



+49 (0)7141 / 31386