



Pneumatic hot stamping machine PT 21 E

Coloured or non-coloured pneumatic hot stamping of parts made of leather, wood or plastics.

Pneumatic hot stamping machine PT 21 E

Coloured or non-coloured pneumatic hot stamping of parts made of leather, wood or plastics.



WIR. PRÄGEN. ZUKUNFT.

Benefits

- Perfect results through stageless adjustable temperature
- Tool-free operation through e.g. pushing of the two-hand release
- Stageless adjustable power of impact for perfect results
- Automatic foil transportation
- Marking area ca. 70 x 60 mm

Technical data

		PT 20 E	PT 21 E
Tool fitting	mm	85 x 57	85 x 57
Total stroke / Useable stroke	mm	70	70
Weight	kg	40	60
Dimensions (w x h x d)	mm	250 x 350 x 650	250 x 350 x 650
Bearing surface table	mm	100 x 100	100 x 100
Marking area (with foil)	mm	70 x 60	70 x 60
Outreach till middle of tool	mm	ca. 150 mm	ca. 150 mm
T-Notch size	mm	10	10
Max. work height (without tool)	mm	ca. 250 mm	ca. 200 mm

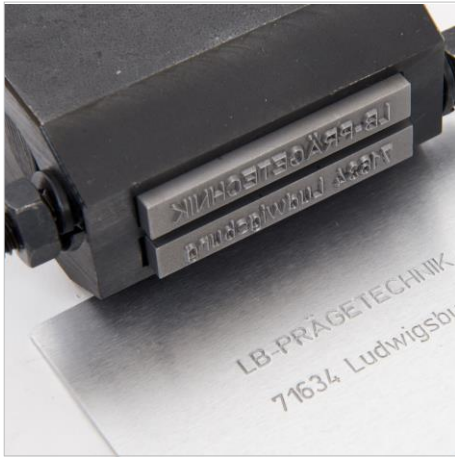
Pneumatic hot stamping machine PT 21 E

Coloured or non-coloured pneumatic hot stamping of parts made of leather, wood or plastics.



WIR. PRÄGEN. ZUKUNFT.

Tools



Type holders



Standard steel types



Engraved types, stamps



Numbering heads

Pneumatic hot stamping machine PT 21 E

Coloured or non-coloured pneumatic hot stamping of parts made of leather, wood or plastics.



WIR. PRÄGEN. ZUKUNFT.

Accessories



Work piece-specific devices



2-hand release

Please contact us

We are pleased to make a **marking sample** as well as a **non-binding offer**.
You are welcome to contact us by phone, mail or fax.



+49 (0)7141 / 374567



info@lb-pt.de



+49 (0)7141 / 31386